

**Compact Solution
for Reprographic
Document Production**

Aficio™ 2075



RICOH
Image Communication

Short Run Efficiency for Long Lasting Success

Life in your reprographic environment is not always easy. In- and external customers become ever more demanding: deadlines get tighter and finishing requirements more complex. The quality your customers expect must be perfect at all times. To meet all these requirements, you need a flexible partner to rely on. A real solution for large and small jobs that enables you to produce exactly what your customers have in mind and even exceed their expectations. But above all, you need a solution that delivers output of impeccable quality at a fast rate. This is precisely what we offer. Firmly established as a leading provider of professional high volume solutions, Ricoh now adds a scaled system to bring you unrivalled versatility. The Aficio™2075 is a truly multifunctional platform that delivers high short run productivity at minimum costs. Professional finishing options and true 1,200 x 1,200 dpi output quality will open up new perspectives for your reprographic production workflow. There is simply no system as complete and cost effective as the Aficio™2075.



The Competitive Advantage is Yours

Deliver high quality on time and success is virtually guaranteed. Depend on the Aficio™2075 to achieve exactly that. This system adds incredible flexibility to your production workflow. Combine fast output with effortless delivery of more elaborate jobs and high grade finishing. Of course, with the same ease of use you expect from Ricoh's high volume solutions.



Easy Z-folding & Streampunching

If your customer wants to present complex data, opt for the new z-folder. This online extension automatically folds A3 sheets into A4, or A4 documents into A5. To prepare for industry standard document binding, the unique GBC StreamPunch™ comes into play.



The GBC StreamPunch™ delivers rock solid punching for up to five popular binding styles: ColorCoil™, WireBind™, CombBind™, SureBind® or traditional Two- or Four-ring.



The z-folder: print complex A3 charts or tables & automatically include them in A4-sized output.



Network Scanning & Storage

As the digital information flow is still expanding, the transition between electronic and hardcopy documents must be seamless at all times. As easy as they are copied, scanned documents can be filed for later retrieval or delivered to any location worldwide, via shared network folders, e-mail or the web (using FTP) in various formats such as PDF, multi-page TIFF or JPEG.



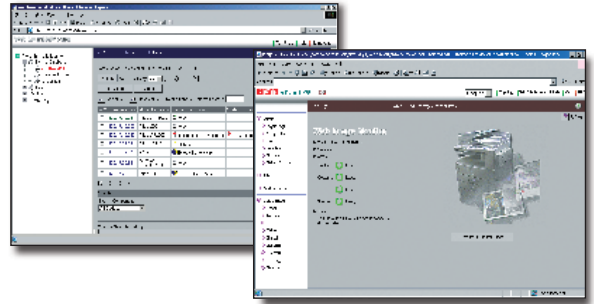
The image on these pages is not a real photograph and slight differences in detail might appear.

With Regards to the Environment

Like all Ricoh products, the Aficio™2075 reflects Ricoh's commitment to the environment with the usage of toxic free materials and low energy toner production. Significant energy savings are also obtained thanks to advanced new power saving modes (ready in 30 seconds from off mode and 10 seconds recovery time from low power mode).

Make your Productivity Soar

Optimum employment of devices and time is the key to a stress free working environment. With the Aficio™2075's 30-second warm up, you could not make a better start! Immediately after feeding the first original, your output starts coming. Duplex originals are scanned in one single pass and reproduced at full engine speed. For true printing on demand, thousands of jobs including all settings can be stored. This eliminates reprogramming after your customer has approved the sample set or orders additional copies later.



Extensive Software Solutions and Utilities

For print rooms, CRD's and print/copy shops, Ricoh offers a range of solutions to help streamline your document process. The Aficio™2075 can be securely monitored and fully configured through the Internet. Print jobs can be automatically re-routed to the most suitable device. Scan and edit software lets you efficiently erase unwanted elements. Files from different sources and formats can conveniently be combined, stored and processed as one document. Intelligent mainframe data stream printing can also be enabled. No need for external adapters, network servers or host based software. A wide variety of cost accounting and billing options help you track costs for up to hundreds of users or customers.



First Class Print Quality

Impress your customers with impeccable output. With its 1,200 x 1,200 dpi print resolution, 5 original modes and 3 image adjustments, the Aficio™2075 makes sure your output lives up to the highest quality standards. This goes for plain white, colour, transparent or thick media types, from the first sheet to the last.

An Uninterrupted Workflow

Long runs can easily be handled thanks to a vast 8,300-sheet maximum paper capacity. As frequent refills are unnecessary, you can fully concentrate on output handling and preparing the next job. If one of the two tandem trays runs empty, the system automatically switches to the other. The empty tray can easily be refilled without interrupting the job in progress.

Exceed Everyone's Expectations

You need a reliable system that is straightforward to operate and extremely durable. But to really get the most from your production workflow and exceed your customer's expectations, versatility and superior quality are key. The Aficio™2075 delivers all of that.

Reliable Expertise & Superb Quality

Formerly, your reprographic workload mainly consisted of traditional jobs. Today, you face higher demands. Jobs have to be ready faster while your customers expect premium print and finishing quality. Designed for superior reliability and excellent output quality, the Aficio™2075 helps you tackle any reprographic challenge.

A Perfect Finish

Unlike other systems in its class, the Aficio™2075 offers your customers a wealth of sophisticated finishing options. For advanced stapling and sorting options, two different document finishers are at your disposal. But there's more. Take booklet making, for example. When done properly, it can become complicated, time consuming and expensive. Not with the Aficio™2075. Producing saddle stitched and folded material is just as easy as creating professionally trimmed and square folded 100-page booklets. Always at full engine speed, even with online cover and chapter insertion! To top it off, z-folding and online streampunching are available.

Moving New Ideas Forward

To meet your unique business requirements, the Aficio™2075 is among the first to feature Ricoh's new Embedded Software Architecture™. This innovative Java™ (J2ME) compatible software development platform allows the design of customised key applications for Ricoh multifunctional systems and laser printers.

Integrated solutions control the way the Aficio™2075 interacts with and enhances your document workflow. For more information, please visit www.ricoh-developer.com.

Secure Connectivity

To open up your full business potential, customers need to be able to submit their jobs to you no matter where they are. The Aficio™2075 guarantees connectivity to virtually any network. Managing user access, e-mail addresses and, above all, protecting data, used to be tedious. Now, your existing Windows® logon infrastructure can automatically be extended to the Aficio™2075. Access to print, copy and scan functions can be managed individually. E-mail addresses can be downloaded and updated from your e-mail directory on the network (via LDAP).

Your Customer's Data in Safe Hands

To protect documents from unauthorised access or duplication, jobs with sensitive information can be held in memory until they are released at the device (Locked Print™). After this, any residual data is automatically erased from the internal hard disk with Ricoh's Data Overwrite Security Unit (option). Finally, e-mail addresses and password information sent from and to the device can be encrypted to preserve maximum network security at all times.



Embedded Software Architecture™

Ricoh's new Embedded Software Architecture™ customised key applications to enhance your document workflow.



Accurate folding, exact stapling and trimming: using the SR90+ booklet maker, you can create booklets of professional quality.



Aficio™ 2075

Specifications



COPIER

Copying process:	Four laser beam & electro photographic printing		
Copy speed:	75 copies per minute ¹		
Resolution:	Output:	1,200 dpi	
	Scan:	600 dpi	
Multiple copy:	Up to 999		
Warm up time:	30 seconds (10 seconds from standby mode)		
First output speed:	4.2 seconds		
Zoom:	25 - 400% (in 1% steps)		
Memory:	Standard:	128 MB + 40 GB Hard Disk Drive	
	Maximum:	384 MB + 40 GB Hard Disk Drive	
Paper input capacity:	Standard:	2 x 1,550-sheet tandem trays	
		2 x 550-sheet paper trays	
		100-sheet bypass tray	
	Maximum:	8,300 sheets	
Paper output capacity:	Maximum:	3,750 sheets	
Paper size:	A6 - A3		
Paper weight:	Paper trays:	53 - 128 g/m ²	
	Bypass tray:	53 - 216 g/m ²	
	Duplex tray:	64 - 128 g/m ²	
Duplexing:	Standard		
Dimensions (W x D x H):	690 x 760 x 1,165 mm		
Weight:	Less than 203 kg		
Power source:	220 - 240 V, 50/60 Hz		
Power consumption:	Maximum:	Less than 1.75 kW	

PRINTER/SCANNER (option)



Printer

Print speed:	75 prints per minute ¹		
Printer language/ resolution:	Standard:	PCL5e: Up to 600 x 600 dpi	
		PCL6/RPCSTM: Up to 1,200 x 1,200 dpi	
	Option:	Adobe® PostScript® 3™: Up to 1,200 x 1,200 dpi	
Interface:	Standard:	Fast Ethernet	
		Parallel Port	
	Option:	Wireless LAN (IEEE 802.11b)	
		FireWire (IEEE 1394)	
		USB 2.0	
		Bluetooth	
Memory:	384 MB + 40 GB Hard Disk Drive (shared with copy function)		
Network protocol:	TCP/IP, IPX/SPX, SMB, AppleTalk		
Supported networks:	Windows® 95/98/Me/NT4.0/2000/XP Server 2003		
	Novell® NetWare® 3.12, 3.2, 4.1, 4.11, 5.0, 5.1, 6		
	UNIX Sun® Solaris 2.6/7/8/9, HP-UX 10.x/11.00		
	SCO OpenServer 5.0.6		
	RedHat® Linux 6.x/7.x/8.x		
	IBM® AIX v4.3/5L v5.1		
	Macintosh 8.6 - 9.2.x (OS X Classic)		
	Macintosh X v10.1 or later (native mode)		



Scanner

Scan speed:	75 originals per minute (A4)	
Resolution:	600 dpi (TWIN: 1,200 dpi), 256 level greyscale	
Maximum original size:	A3	
Output formats:	PDF, JPEG, TIFF	
Bundled drivers:	Network TWIN	
Scan to e-mail:	Authentication:	SMTP or POP3 before SMTP
	Destination address selection:	Via LDAP local address book or direct input
Destination addresses:	Up to 500 from local address book	
	Up to 100 via LDAP	
Stored destination addresses:	Maximum 2,000	
Scan to folder:	Via SMB or FTP protocol, up to 50 folders per job	



Software

- SmartDeviceMonitor™ for Admin/Client
- Web Image Monitor (embedded)
- DeskTopBinder™ V2 Lite
- TWIN driver
- Printer utility for Macintosh
- Agfa Font Manager

OTHER OPTIONS

- 4,000-sheet large capacity tray (RT43)
- Cover interposer
- 3,000-sheet finisher with 100-sheet stapler (SR841)
- Jogger unit for finisher SR841
- 3,000-sheet finisher with 50-sheet stapler (SR850)
- 3,000-sheet booklet finisher (SR861)
- 9-bin mailbox (CS390)
- 2/4 hole punch unit
- Professional booklet maker (SR90+)
- Z-folder
- GBC StreamPunch™
- Data Overwrite Security Unit
- File Format Converter
- Copy Connect kit
- Adobe® PostScript® 3™ module
- Wireless LAN (IEEE 802.11b) interface
- FireWire (IEEE 1394) interface
- USB 2.0 interface
- Bluetooth interface

OPTIONAL SOFTWARE

- Equitrac Office™
- doc-Q-manager
- doc-Q-route

¹ Also available are the Aficio™2051/2060, similar to the Aficio™2075 but offering a 51/60 pages per minute output speed.

For availability of models, optional apparatus and software, please contact your local Ricoh representative.



ISO9001:2000 certified
ISO14001 certified

Ricoh has determined that this product meets the ENERGY STAR guidelines for energy efficiency.

Ricoh believes in conserving the earth's precious natural resources. This brochure is printed on environmentally friendly paper: 50% recycled fibres, 50% chlorine free bleached pulp.

All brand and/or product names are trademarks of their respective owners.

Specifications and external appearance are subject to change without notice. The colour of the actual product may vary from the colour shown in the brochure.

RICOH
Image Communication

For more information, please contact:

RICOH EUROPE B.V. Groenelaan 3,
P.O. Box 114, 1180 AC Amstelveen,
The Netherlands.
Phone: +31 (0)20-5474111
Fax: +31 (0)20-6418601

www.ricoh-europe.com